

Drain: FREEMONT RANDALL Drain #: 51  
Improvement/Arm: HAZEL DELL PKWAY  
Operator: J. LIVINGSTON Date: 5-27-04  
Drain Classification: Urban/Rural Year Installed: 1997

### GIS Drain Input Checklist

- Pull Source Documents for Scanning
- Digitize & Attribute Tile Drains
- Digitize & Attribute Storm Drains
- Digitize & Attribute SSD
- Digitize & Attribute Open Ditch
- Stamp Plans
- Sum drain lengths & Validate
- Enter Improvements into Posse
- Enter Drain Age into Posse
- Sum drain length for Watershed in Posse
- Check Database entries for errors

JL  
JL  
JL  
JL  
JL  
JL  
JL  
JL  
JL  
JL  
JL

**Gasb 34 Footages for Historical Cost  
Drain Length Log**

Drain-Improvement: FREEMONT RANDALL - HAZEL DELL PKWY

Drain Type:	Size:	Length	Length (DB Query)	Length Reconcile	If Applicable	
					Price:	Cost:
RCP	60"	10'	10'		98. <sup>85</sup> / <del>lf</del>	988. <sup>50</sup>
ERCP	91"x58"	140'	140'		252. <sup>4</sup> / <del>lf</del>	35,280. <sup>50</sup>

Sum: 150' 150' \$36,268.<sup>50</sup>

Final Report: \_\_\_\_\_

Comments:

---



---



---



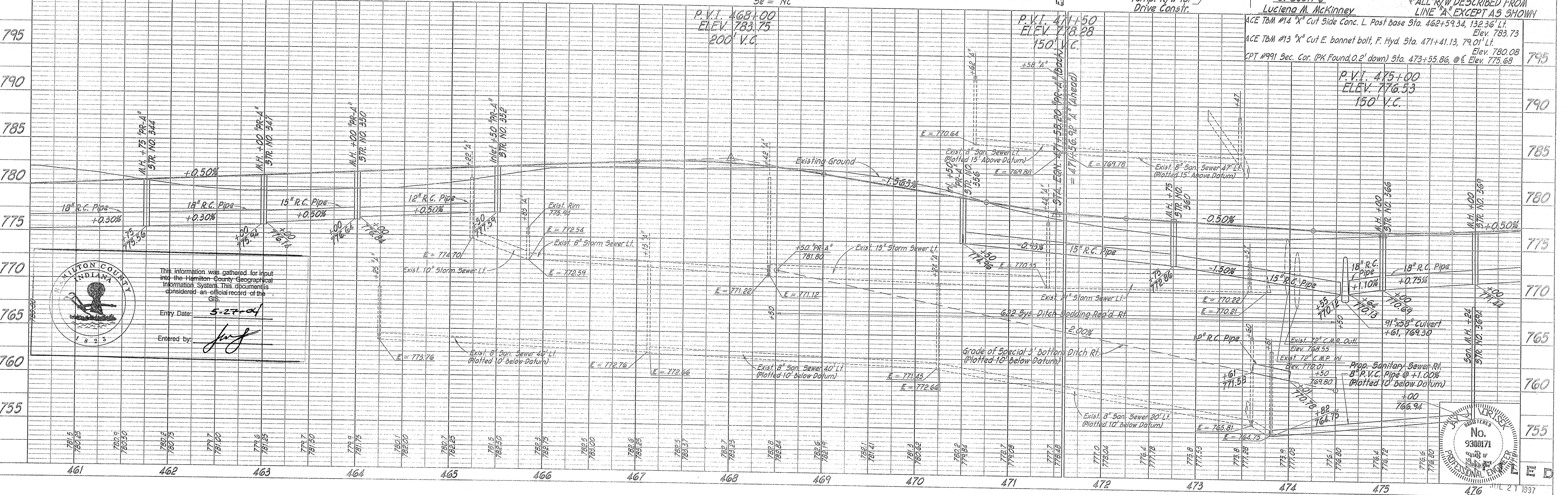
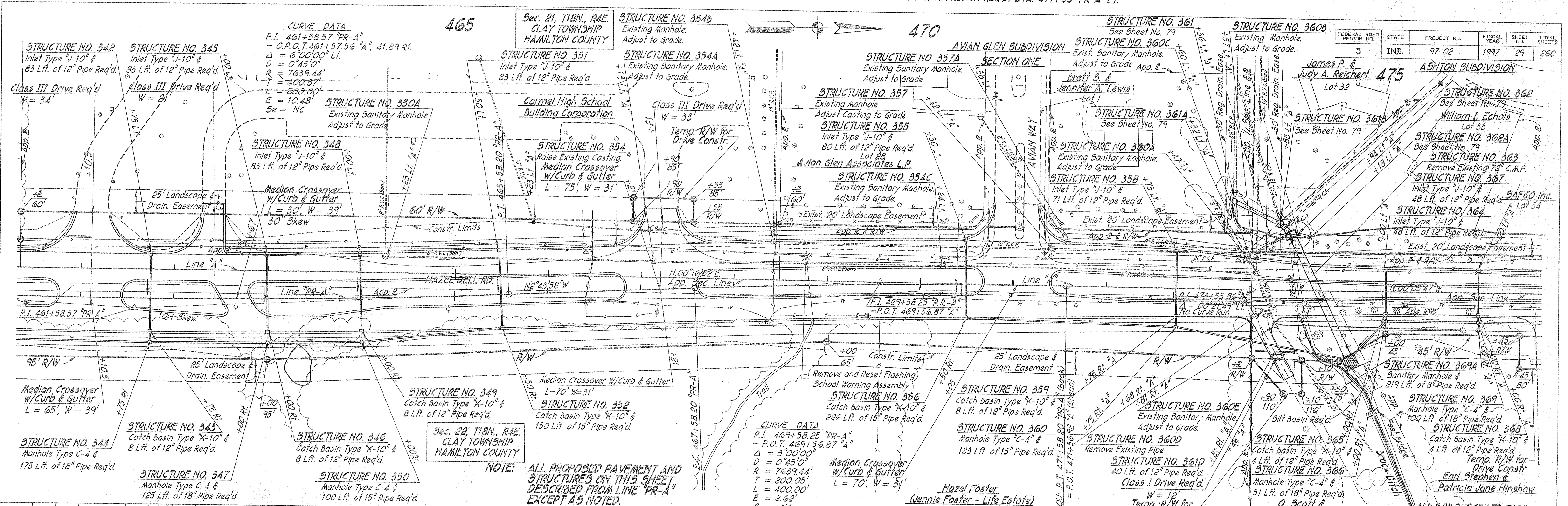
---



---

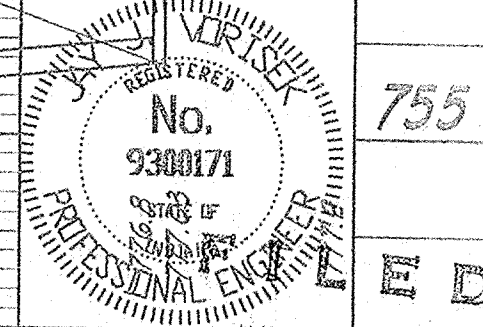


FEDERAL ROAD DISTRICT NO.	STATE	PROJECT NO.	FISCAL YEAR	SHEET NO.	TOTAL SHEETS
5	IND.	97-02	1997	29	260

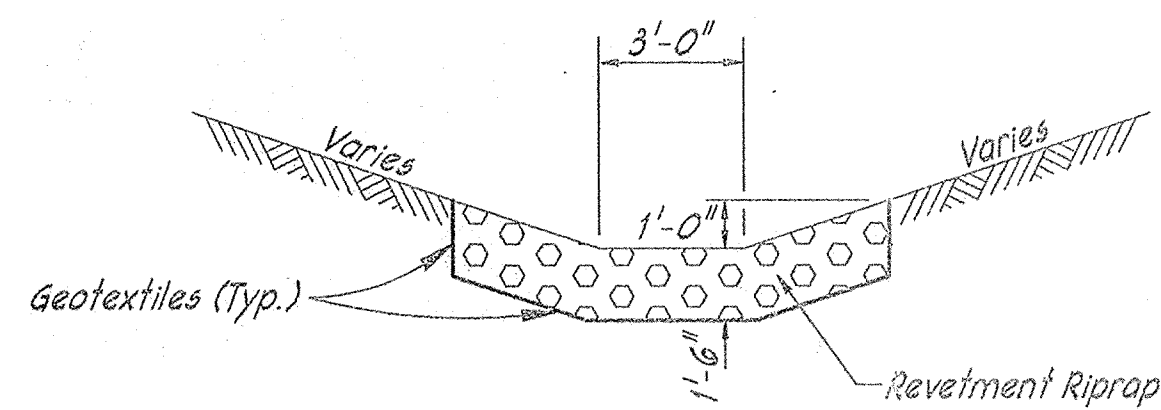


This information was gathered for input into the Hamilton County Geographical Information System. This document is considered an official record of the GIS.

Entry Date: 5-27-04  
 Entered by: [Signature]

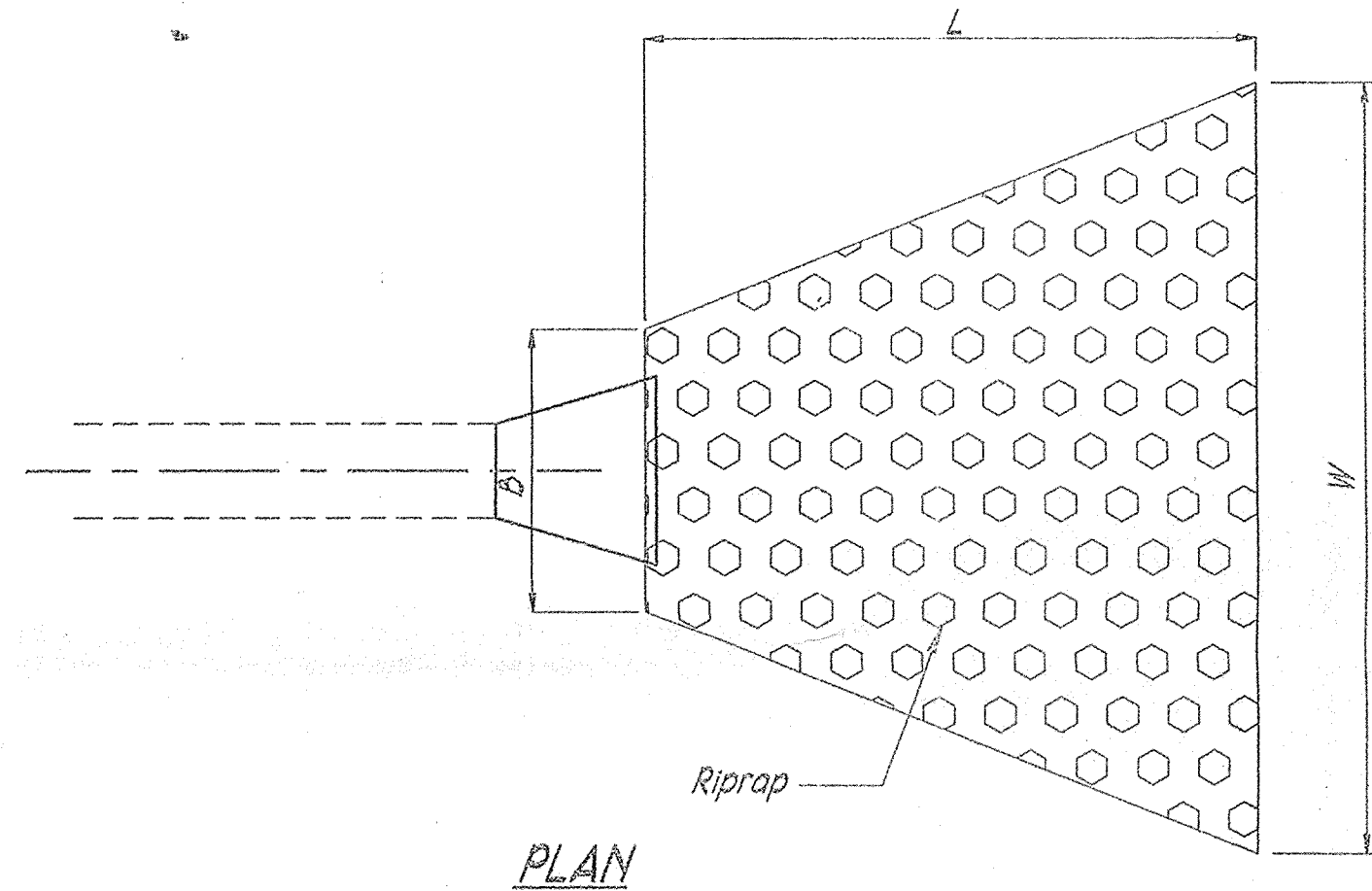




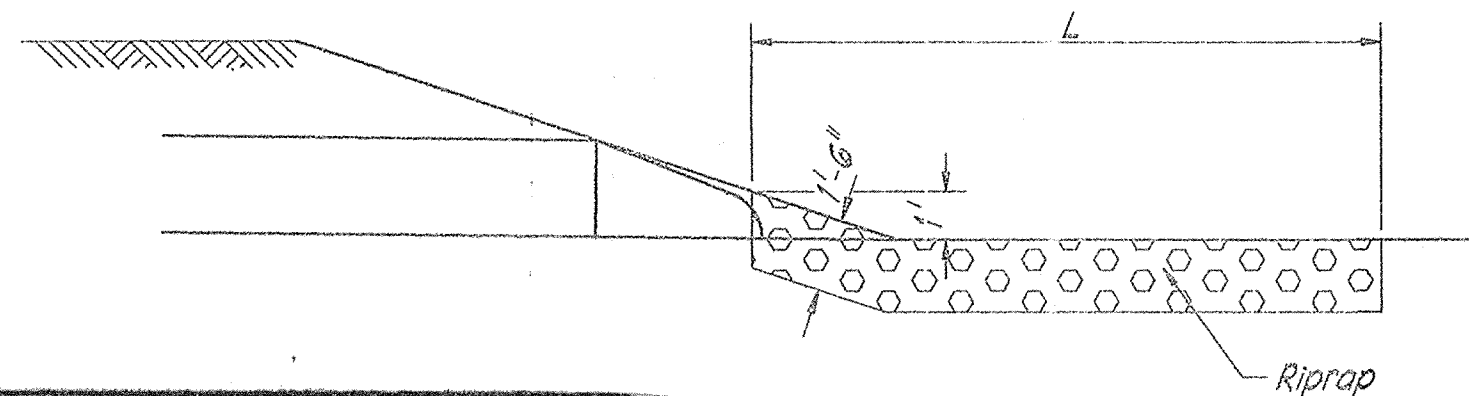


**RIPRAP DITCH DETAIL**

Scale: None



**PLAN**



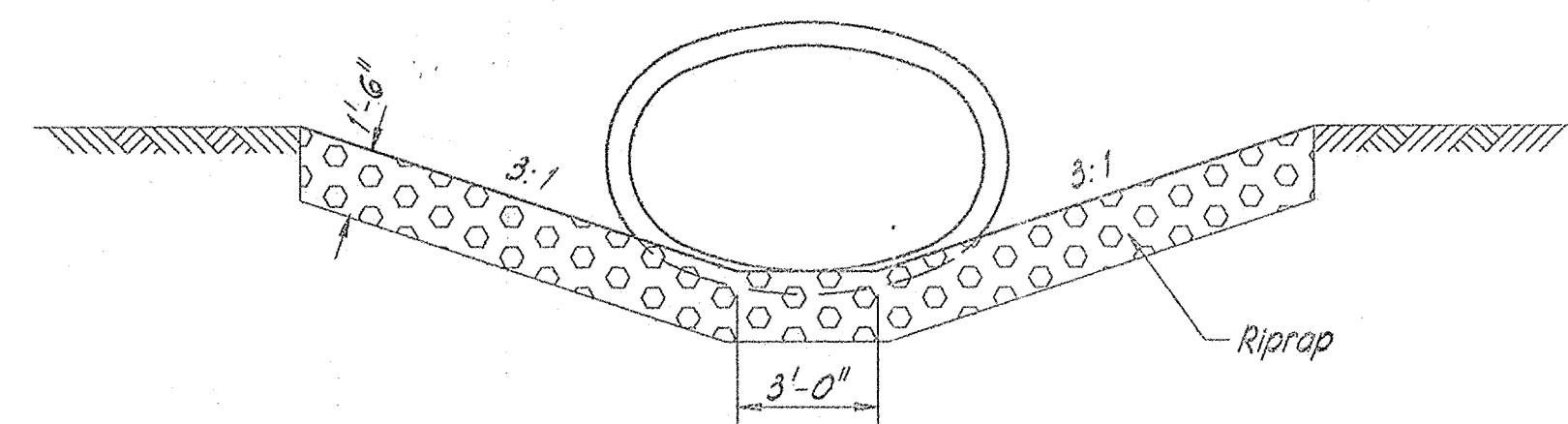
**ELEVATION**

**RIPRAP TABLE**

STR. #	B	L	W	TONS
31	5'	18'	25'	30
142	15'	34'	15'	57
164	12'	20'	20'	35
362	15'	15'	15'	25
419	3'	10'	12'	8
421	3'	10'	12'	8
450A	5'	15'	20'	20

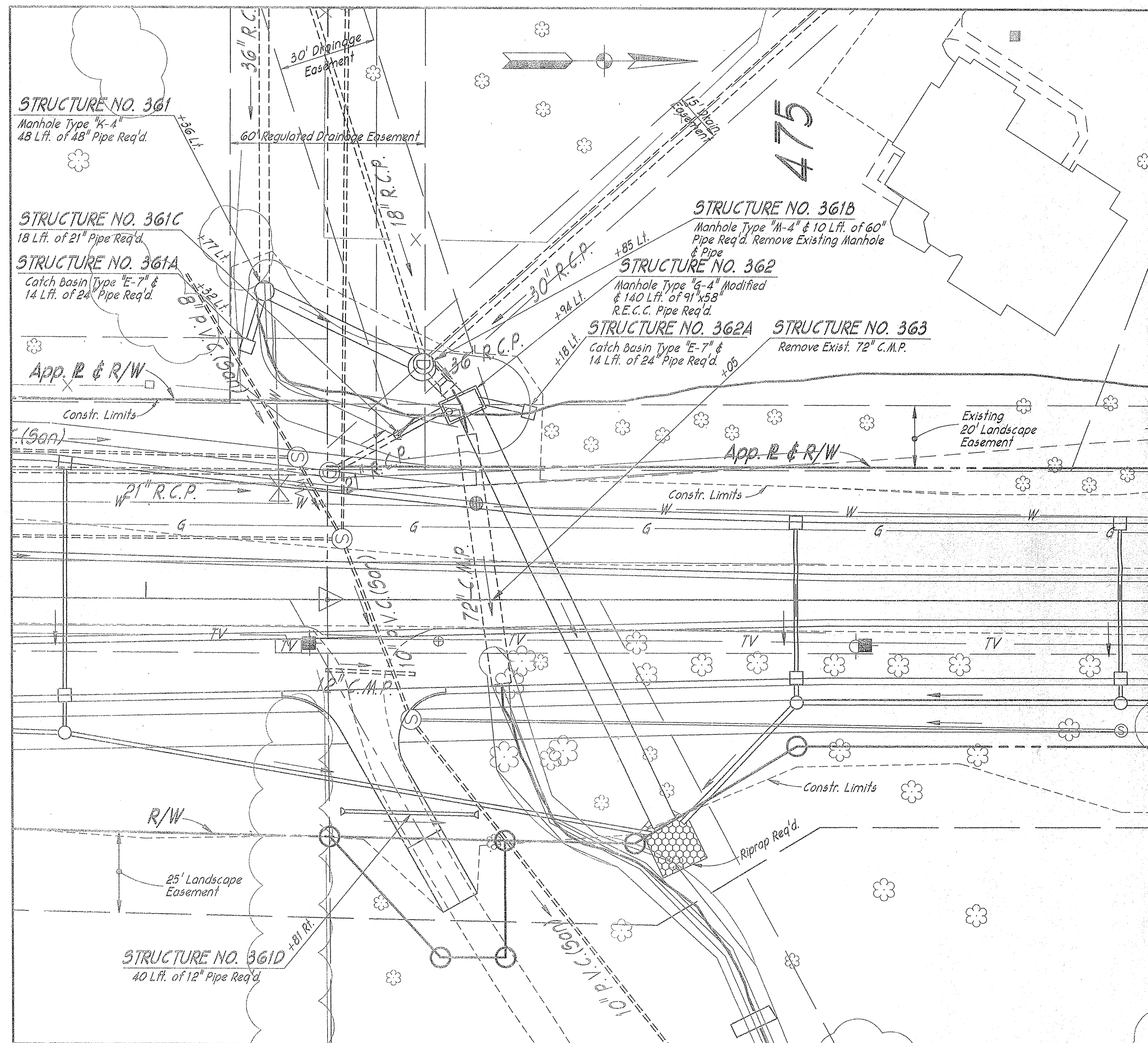
**PIPE OUTLET DETAIL**

Scale: None



**BROCK DITCH CULVERT ~ DOWNSTREAM**

Scale: None



**DRAINAGE DETAIL - BROCK DITCH**

Scale: 1" = 20'



This information was gathered for input into the Hamilton County Geographical Information System. This document is considered an official record of the GIS.

Entry Date: 5-27-04

Entered by: *JVF*

**DETAILS**

**FILED**

JUL 21 1997

OFFICE OF HAMILTON COUNTY SURVEYOR

